

1. EnOcean

Note! Not every LogicMachine product has optionally built-in EnOcean.

LogicMachine can support EnOcean through a USB gateway which is based on a product USB 300 (OEM), delivered by the EnOcean organization as an OEM product to 3rd parties.

Note! Different frequencies are used for EnOcean (based on geographical region). Be careful and select the proper USB gateway for your location.

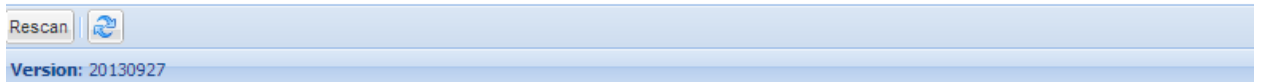
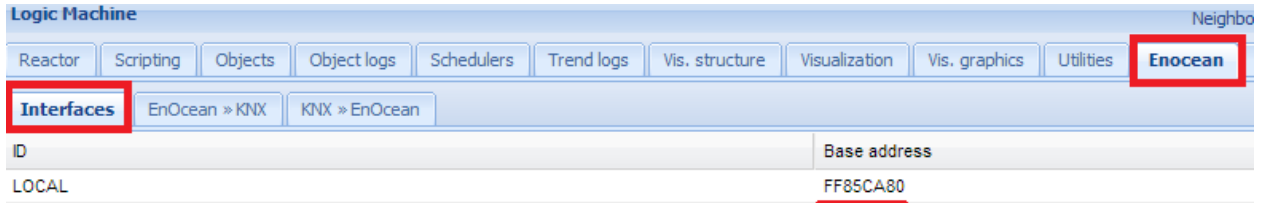
EnOcean frequencies:

- 868 MHz - Europe
- 902 MHz - USA / Canada
- 928 MHz - Japan
- 2.4 GHz - Worldwide usage

USB gateway is a small USB stick which connects PC's, consumer devices, DSL boxes and other USB master devices to EnOcean based radio products. It is equipped with a TCM 310 transceiver gateway module. It provides bidirectional EnOcean radio and bidirectional serial interface via USB. Radio messages are sent and received via an externally connected USB host.

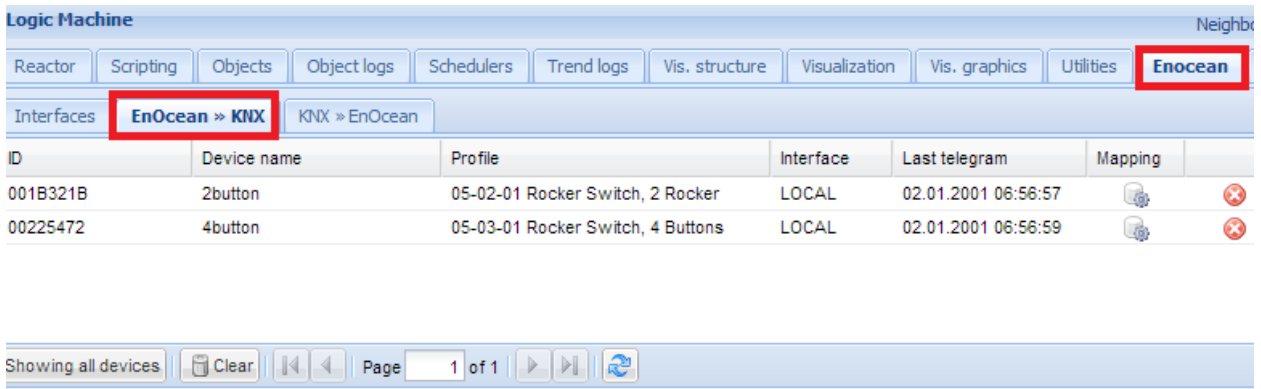
1.1. EnOcean interfaces

An EnOcean interface Base address can be found in the *EnOcean* → *Interfaces* tab.

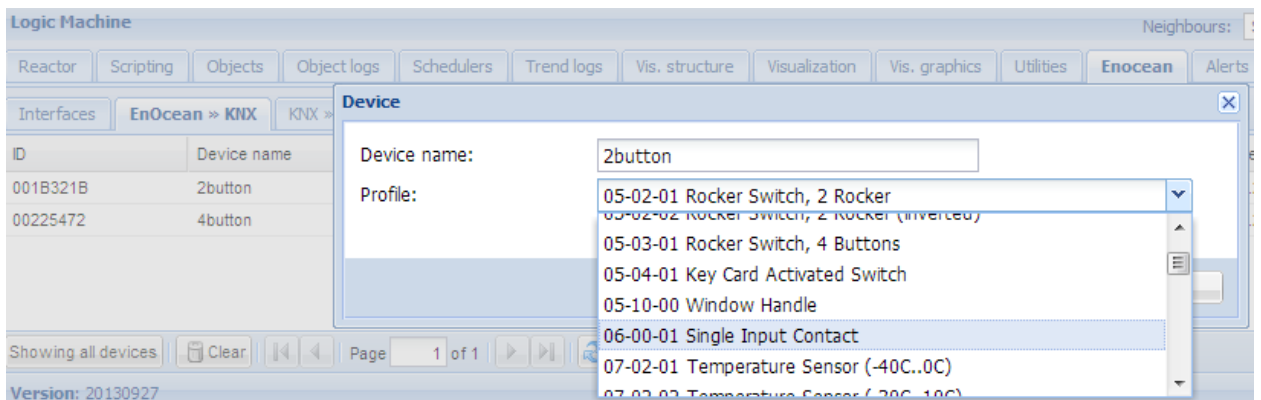



1.2. EnOcean to KNX mapping

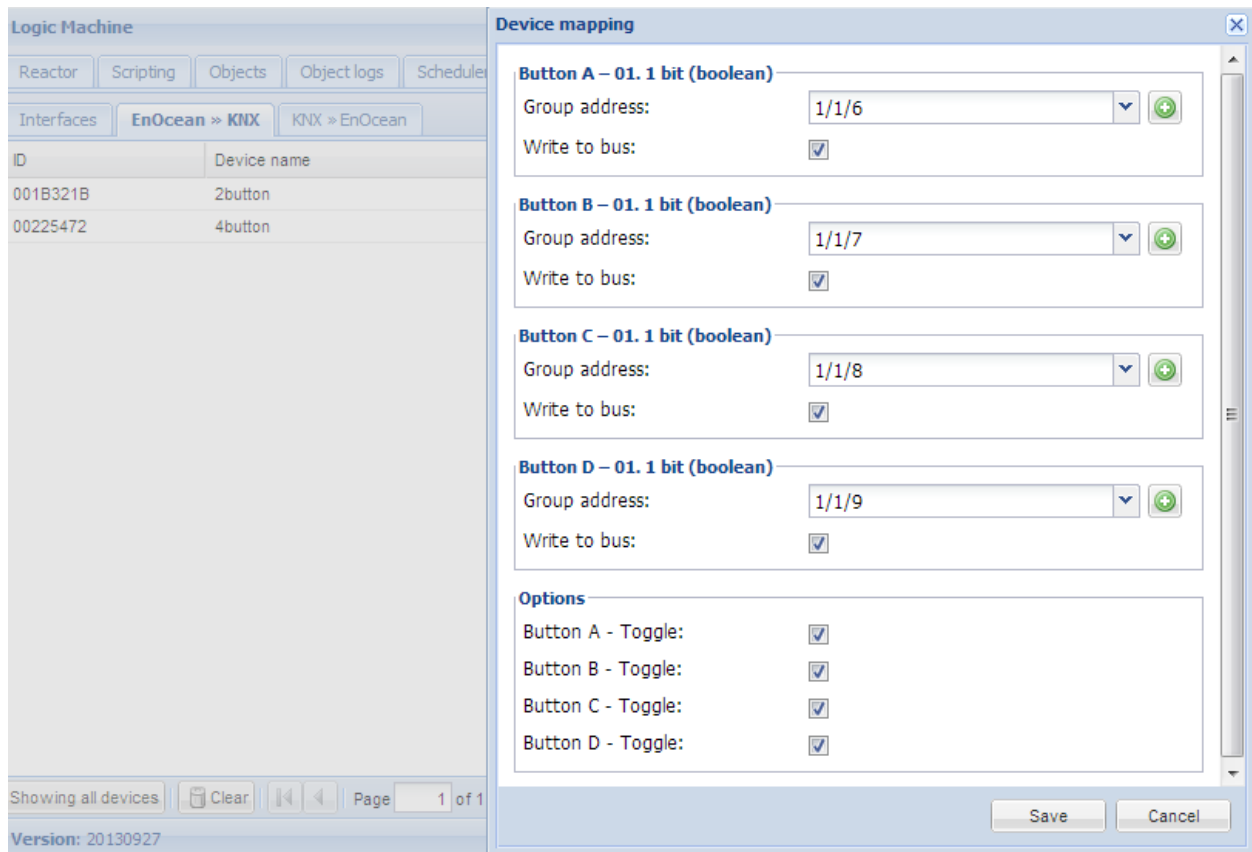
All telegrams received from EnOcean devices appear in the *EnOcean* → *KNX* section.



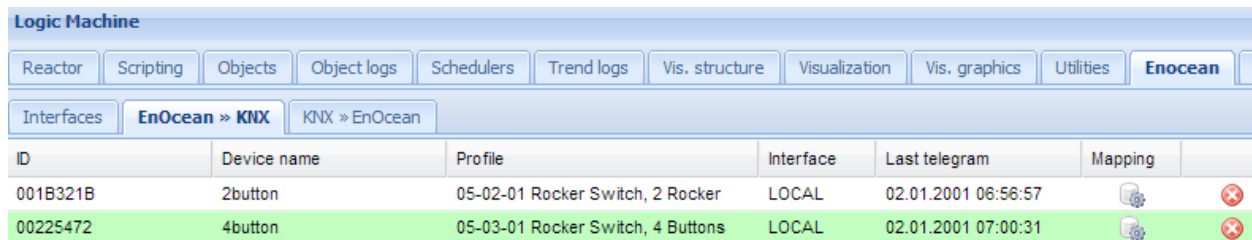
Once some specific device has to be mapped to KNX, the corresponding row has to be clicked and the profile has to be chosen. There are all main profiles predefined in the list.



Once the device profile is set, you can map functionality of the specific device to KNX group addresses by clicking on the *Mapping* icon  .



When EnOcean gateway has received a telegram from a specific device, the respective row gets light green.



Respective KNX group addresses get updated with the new values, go to *LogicMachine* → *Objects* tab to see changes.

Logic Machine

Scripting **Objects** Object logs Buildings Visualization Visualization icons Utilities EnOcean Alerts Logs Error log Help

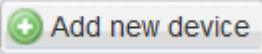
Group addr...	Object name	Data type	Current value	Logging enabled	Tags	Object comments	Set value			
11/7/12	Pushbutton2 - Button A	01. 1 bit (boolean)	0	No		EnOcean FFF63C...				
11/7/13	Pushbutton3 - Button A	01. 1 bit (boolean)	0	No		EnOcean FFF63C...				
11/7/15	room panel - Fan Auto	01. 1 bit (boolean)	1	No		EnOcean 0003A...				
11/7/16	room panel - Fan Speed	05.001 scale	66%	No		EnOcean 0003A...				
11/7/17	room panel - Occupancy ...	01. 1 bit (boolean)	0	No		EnOcean 0003A...				
11/7/18	room panel - Set Point	09. 2 byte floating point	22.56	No		EnOcean 0003A...				
11/7/19	room panel - Temperature	09. 2 byte floating point	20.5	No		EnOcean 0003A...				
1/4/6	LED Dimmer 3	05.001 scale	55%	No						

Auto update enabled

 Page 3 of 3

Displaying objects 61 - 68 of 68

1.3. KNX to EnOcean mapping

You should click on the *Add new device* button  to add the EnOcean device which will be communicated from a specific KNX object.

Logic Machine

Reactor Scripting **Objects** Object logs Schedulers Trend logs Vis. structure Visualization Vis. graphics Utilities **EnOcean** Alerts Logs

Interfaces EnOcean » KNX **KNX » EnOcean**

Address	Device name	Profile	Interface	Last talk

Device


Interface: LOCAL (BaseID: FF85CA80)

Address offset: 0

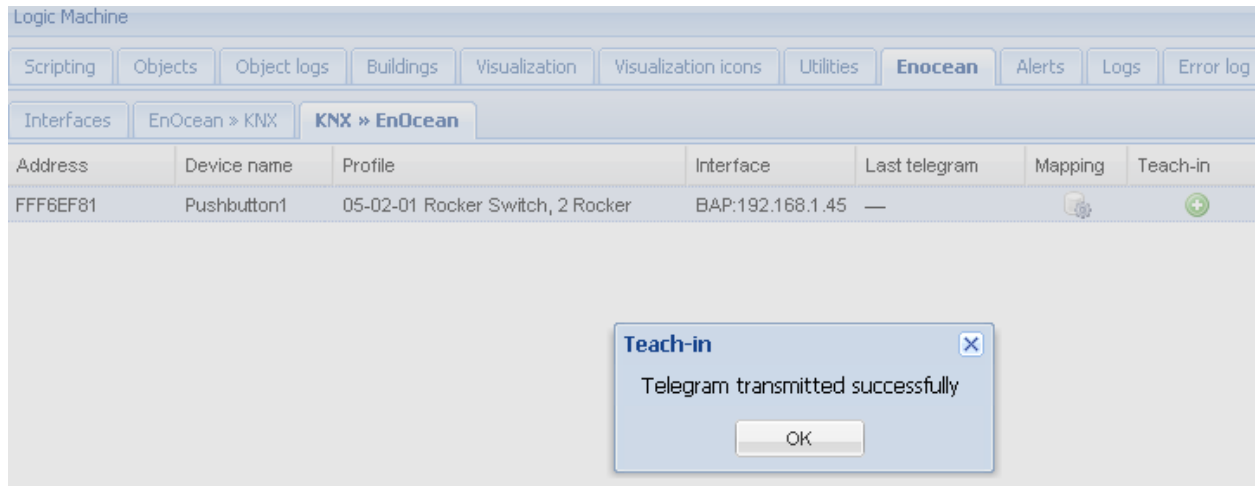
Device name:

Profile:

Page 1 of 1

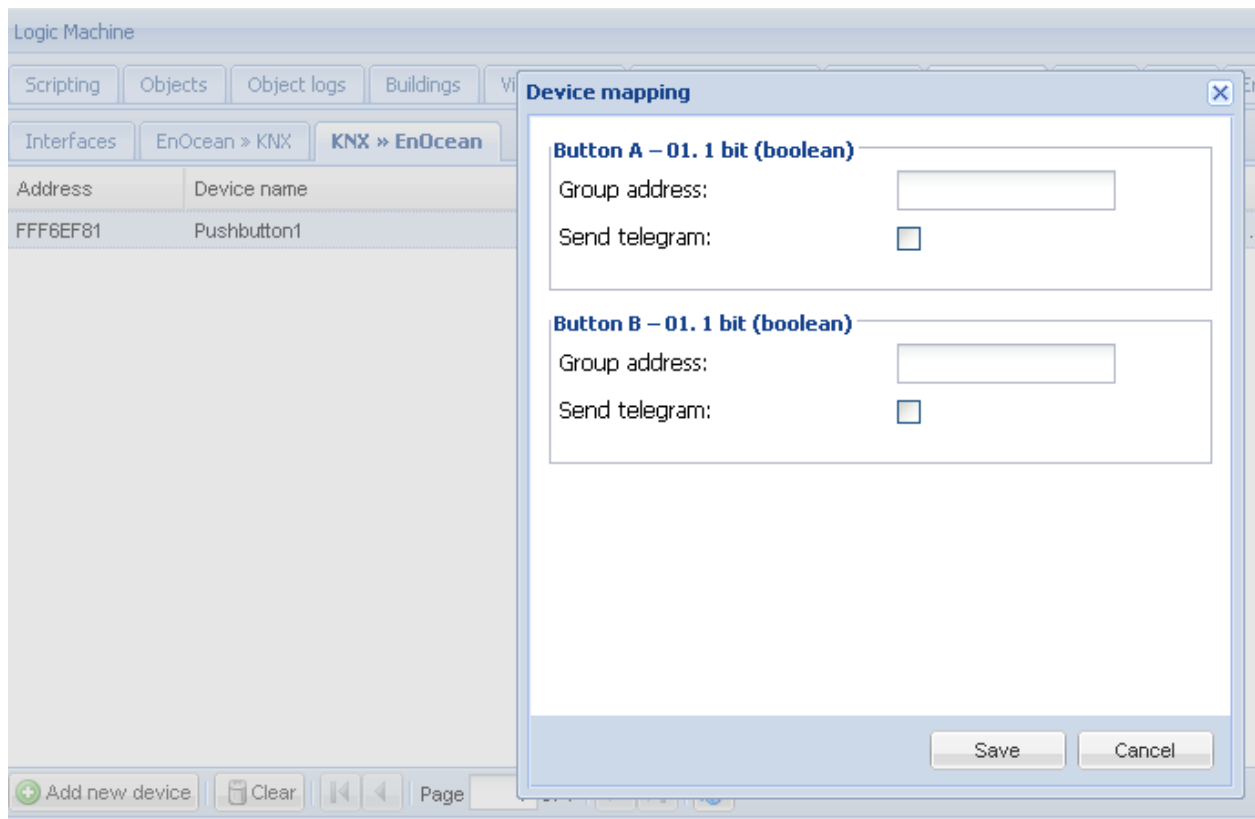
Once the device was added, you should pair it with a specific device in the EnOcean network, click on a *Teach-in* button  (*EnOcean* → *KNX >> EnOcean* tab).

Note! The EnOcean device should be set in a learning mode in order to pair it successfully.



Further this device can be mapped with specific KNX addresses.

When KNX object value will be updated, the telegram will be sent to the respective EnOcean device.



1.4. Supported EnOcean profiles

F6-01-01	Rocker Switch, 1 Rocker
F6-01-02	Rocker Switch, 1 Rocker (inverted)
F6-01-03	Rocker Switch, 1 Rocker (separate)
F6-02-01	Rocker Switch, 2 Rocker
F6-02-02	Rocker Switch, 2 Rocker (inverted)
F6-03-01	Rocker Switch, 4 Buttons
F6-03-02	Rocker Switch, 2 Buttons - On/Off/Toggle/Dim/Scene
F6-03-03	Rocker Switch, 4 Buttons - On/Off/Toggle/Dim/Scene
F6-04-01	Key Card Activated Switch
F6-05-01	Liquid Leakage Sensor
F6-10-00	Window Handle
D5-00-01	Single Input Contact
A5-02-01	Temperature Sensor (-40C..0C)
A5-02-02	Temperature Sensor (-30C..10C)
A5-02-03	Temperature Sensor (-20C..20C)
A5-02-04	Temperature Sensor (-10C..30C)
A5-02-05	Temperature Sensor (0C..40C)
A5-02-06	Temperature Sensor (10C..50C)
A5-02-07	Temperature Sensor (20C..60C)
A5-02-08	Temperature Sensor (30C..70C)
A5-02-09	Temperature Sensor (40C..80C)
A5-02-0A	Temperature Sensor (50C..90C)
A5-02-0B	Temperature Sensor (60C..100C)
A5-02-10	Temperature Sensor (-60C..20C)

A5-02-11	Temperature Sensor (-50C..30C)
A5-02-12	Temperature Sensor (-40C..40C)
A5-02-13	Temperature Sensor (-30C..50C)
A5-02-14	Temperature Sensor (-20C..60C)
A5-02-15	Temperature Sensor (-10C..70C)
A5-02-16	Temperature Sensor (0C..80C)
A5-02-17	Temperature Sensor (10C..90C)
A5-02-18	Temperature Sensor (20C..100C)
A5-02-19	Temperature Sensor (30C..110C)
A5-02-1A	Temperature Sensor (40C..120C)
A5-02-1B	Temperature Sensor (50C..130C)
A5-04-01	Temperature & Humidity Sensor (0C..40C, 0%..100%)
A5-04-02	Temperature & Humidity Sensor (-20C..60C, 0%..100%)
A5-06-01	Light Sensor (300lx..60000lx)
A5-06-02	Light Sensor (0lx..1024lx)
A5-06-03	Light Sensor (0lx..100lx, 300lx..30000lx)
A5-07-01	Occupancy Sensor
A5-08-01	Light Sensor 0lx to 510lx, Temperature 0C to 51C and Occupancy
A5-08-02	Light Sensor 0lx to 1020lx, Temperature 0C to 51C and Occupancy
A5-08-03	Light Sensor 0lx to 1530lx, Temperature -30C to 50C and Occupancy
A5-09-04	Humidity, CO2, Temperature Sensor
A5-10-01	Temperature Sensor; Set Point, Fan Speed and Occupancy Control
A5-10-02	Temperature Sensor; Set Point, Fan Speed and Day/Night Control
A5-10-03	Temperature Sensor; Set Point Control

A5-10-04	Temperature Sensor; Set Point and Fan Speed Control
A5-10-05	Temperature Sensor; Set Point and Occupancy Control
A5-10-06	Temperature Sensor; Set Point and Day/Night Control
A5-10-07	Temperature Sensor; Set Point and Fan Speed Control
A5-10-08	Temperature Sensor; Fan Speed Control
A5-10-09	Temperature Sensor; Fan Speed and Day/Night Control
A5-10-0A	Temperature Sensor; Set Point and Single Input Contact
A5-10-0B	Temperature Sensor and Single Input Contact
A5-10-0C	Temperature Sensor and Occupancy Control
A5-10-0D	Temperature Sensor and Day/Night Control
A5-10-10	Temperature and Humidity Sensor; Set Point and Occupancy Control
A5-10-11	Temperature and Humidity Sensor; Set Point and Day/Night Control
A5-10-12	Temperature and Humidity Sensor; Set Point Control
A5-10-13	Temperature and Humidity Sensor; Occupancy Control
A5-10-14	Temperature and Humidity Sensor; Day/Night Control
A5-14-01	Single Input Contact, Supply Voltage Monitor
A5-20-01	Wireless Valve Actuator
A5-20-10	Generic HVAC interface
A5-30-01	Single Input Contact, Battery Monitor
A5-30-02	Single Input Contact
A5-38-08-01	Switch
A5-38-08-02	Dimmer